

RVS4000: Access the Web-Based Setup Page

Document ID: 109080

Questions

Introduction

How do I access the RVS4000 web-based setup page?

Related Information

Introduction

This article is one in a series to assist in the setup, troubleshooting, and maintenance of Cisco Small Business products (formerly Linksys Business Series).

Refer to Cisco Technical Tips Conventions for more information on document conventions.

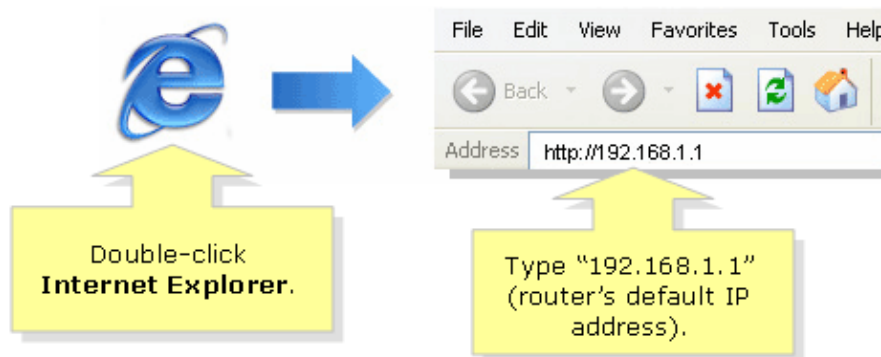
Q. How do I access the RVS4000 web-based setup page?

A. All Linksys routers have built-in web-based setup pages that allow the user to customize settings and set up advanced properties.

Note: Before accessing the router's web-based setup page, make sure the router is powered on and the computer is wired to one of the Ethernet ports on the router (1, 2, 3 or 4).

Complete these steps in order to access the web-based setup page:

1. Open a web browser (such as Internet Explorer).



2. Enter your router's IP address. (192.168.1.1 is the default IP of most Linksys routers.)

Note: If the IP address of the router has been changed, type the new IP address in the address bar instead.

The router's IP address can be changed by:

- ◇ Running the router's setup CD.
- ◇ Changing it on the router's web-based setup page.

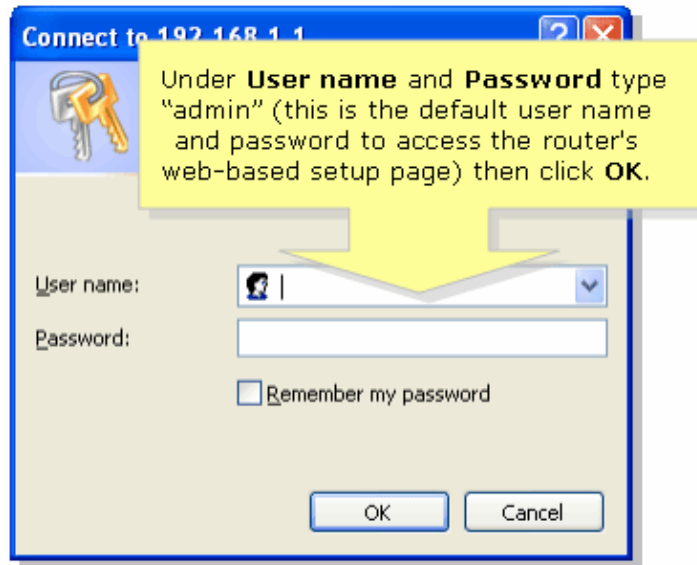
If you forgot the router's IP address you can:

◇ Verify the router's IP address.

◇ Press the **Reset** button at the back of the router for 30 seconds.

Note: This procedure resets your router to factory defaults. Any settings on the router are erased. After you reset the router, the IP address defaults to *192.168.1.1*, and the user name and password defaults to *admin*.

The Connect to 192.168.1.1 dialog box appears.



3. In the User name and password fields, type **admin**, and then click **OK**.

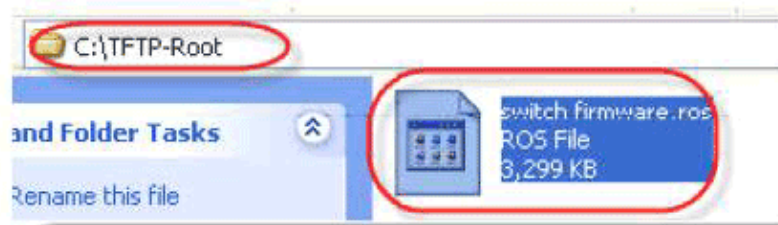
Note: If the user name and password of the router has been changed, type the new user name and password in both fields instead.

After you log in, the web-based utility starts. By default, the Setup tab's Summary screen is the first screen displayed after log in.

The utility's main functions are indicated by eight tabs that appear at the top of each screen: Setup, Firewall, VPN, QoS, Administration, IPS, L Switch, and Status. After you click a tab, a list of that tab's screens is displayed below the tab bar.

4. In order to perform a specific function, click a tab, and then choose the appropriate screen.

The utility's tabs and screens are described below.



Note: If you experience issues accessing the web-based setup page, you might need to re-initial the configuration for subnet 192.168.2.1.

Related Information

- **Technical Support & Documentation – Cisco Systems**

[Contacts & Feedback](#) | [Help](#) | [Site Map](#)

© 2008 – 2009 Cisco Systems, Inc. All rights reserved. [Terms & Conditions](#) | [Privacy Statement](#) | [Cookie Policy](#) | [Trademarks of Cisco Systems, Inc.](#)

Updated: Jun 01, 2009

Document ID: 109080
