

Password Recovery Procedure for the Password Recovery Procedure for Cisco Aironet Equipment

Document ID: 9215

You need a valid Cisco.com account in order to download Cisco Aironet drivers, firmware, and utilities (registered customers only) . If you do not have a Cisco.com account, register for free at the Cisco.com Registration page.

Introduction

Prerequisites

- Requirements

- Conventions

Access Point

- Determine the OS

- Connect to the AP

- Reset the AP VxWorks Versions That Are Earlier Than 11.07

- Reset the AP VxWorks Version 11.07 or Later

- Reset the AP Cisco IOS Software

- Reset the AP AP 350 That Runs Cisco IOS Software

Base Station

- Set Defaults with the Reset Button

Client Adapters

- SSID

- Set Defaults

- CEM Password

- WEP Keys

Aironet 1410 Series Bridge

Aironet 1310 Series Bridge

Aironet 350 Series Bridge

- For Software Version 11.xx or Later

Aironet 340 Series Bridge

- For Software Version 8.65 or Later

- For Software Versions That Are Earlier Than 8.65

Workgroup Bridge

Related Information

Introduction

This document describes how to recover a password or to restore the default settings on various Cisco Aironet Wireless LAN (WLAN) equipment.

Note: Unlike other Cisco platforms, the Aironet hardware and software do not allow password recovery. You must instead return the equipment to its default state, from which it can be reconfigured.

Prerequisites

Requirements

There are no specific requirements for this document.

Conventions

Refer to Cisco Technical Tips Conventions for more information on document conventions.

Access Point

There are two operating systems (OSs) that are currently in use on Aironet access points (APs). The OS on which a unit runs determines which procedure to use for password recovery.

Determine the OS

The VxWorks OS runs on:

- Aironet 340 series APs
- Some Aironet 350 series APs
- Some Aironet 1200 series APs, which are also known as AP 1220

Note: The GUI for VxWorks has yellow bands with black and red text. The Cisco logo is in the upper right corner of the page.

The Cisco IOS® Software OS runs on:

- Aironet 1100 series APs
- Some Aironet 1200 series APs, which are also known as AP 1230
- Some Aironet 350 series APs

Note: The GUI for Cisco IOS Software is predominantly green and gray with black and blue text. The Cisco logo is in the upper left corner of the page.

The procedure to reset the AP configuration under VxWorks changed with version 11.07.

In all versions of the AP software, you must first connect to the AP in order to perform the recovery. Then perform the steps to reset the unit.

Connect to the AP

Complete the steps in this section in order to connect to the AP.

Note: The AP 1100 does not have a console port, so these instructions do not apply. If you cannot obtain Telnet or browser access, you must reset the unit to factory defaults and completely reconfigure the unit again.

Note: For APs that have a console port, you can use the console port in order to do password recovery. Use a console cable to connect to the console port. Other cables, such as straight-through, do not work on the console port.

1. Use a straight-through cable with 9-pin male to 9-pin female connectors in order to connect the COM 1 or COM 2 port on your computer to the RS-232 port on the AP.

On 1200 series AP models, the console port is an RJ-45 connector, and you can use the same console cable that is used for Cisco routers and switches. For more information, refer to the Cabling Guide for Console and AUX Ports.

2. Open a terminal-emulation program on your computer.

Note: These instructions describe Microsoft HyperTerminal. Other programs are similar.

3. Enter a name in the Connection Description window.
4. Select an icon for the connection.
5. Click **OK**.
6. In the Connect To window, use the Connect using pull-down menu in order to choose the port where the cable is connected.
7. Click **OK**.
8. In the Port Settings window, make these selections:

- ◆ Bits per second (baud): **9600**
- ◆ Data bits: **8**
- ◆ Parity: **None**
- ◆ Stop bits: **1**
- ◆ Flow Control: **None**

9. Click **OK**.
10. Press **Enter**.

Reset the AP VxWorks Versions That Are Earlier Than 11.07

If you forget the password that allows you to configure the AP, you must reset the entire configuration to the factory default. Use these steps in order to reset the AP configuration and assign a new password.

Complete these steps in order to reset the AP configuration:

1. When the power is on, press and hold the reset button.
2. Unplug the power, and continue to hold the reset button for 5 –10 seconds.
3. Plug in the power as you continue to hold the reset the button.
4. Release the reset button.

This procedure applies to almost all models of APs and bridges.

Note: These steps do not recover a password. When you complete these steps, you delete the current configuration and return AP settings to the factory defaults. You also preserve the Installation Key, without which the AP does not function.

Determine the Boot Block Version

The steps that you use to reset the AP depend on the version of the boot block of the AP. Use these steps in order to find out which boot block version is on your AP. Then use the appropriate instructions for version 1.01 or earlier or version 1.02 or later.

When the Summary Status screen appears, reboot the AP. In order to reboot, you can unplug and then replug the power connector or press **CTRL-X**.

As the AP reboots, the introductory system information appears. The boot block version appears in the third line of this text and is labeled `Bootstrap Ver`. If your boot block version is 1.01, your introductory text looks like this:

Motherboard: MPC860 50MHz, 2048KB FLASH, 16384KB DRAM, Revision 20
Bootstrap Ver. 1.01: FLASH, CRC 4143E410 (OK)
Initialization: OK

Reset for Boot Block Version 1.01 or Earlier

Complete these steps in order to reset your AP if the boot block version on your AP is version 1.01 or earlier:

1. Connect to the AP.
2. Click **OK**.
3. Press **Enter**.
4. When the Summary Status screen appears, reboot the AP.

In order to reboot, you can unplug and then replug the power connector or press **CTRL-X**.

Here is an example of the Summary Status screen:

BR350-5d9a2c		[Cisco 350 Series Bridge 12.00T]		Uptime: 00:13:09	
Associations					
[Cints: 0] of 0		[Rptrs: 0] of 0		[Brdgs: 0] of 1 [APs]: 1	
Events					
Time	Severity	Description			
00:02:25	(Info):	Successfully configured DHCP Parameters			
00:01:08	(Warning):	No DHCP OFFER's received, restarting the negotiation in the background			
Network Ports					
Device	Status	Mb/s	===[Diagnostics]===		
[Ethernet]	Up	100.0	IP Addr:	MAC	Addr:
[Rt Radio]	Up	11.0	192.168.1.102	0040965d9a2c	
			192.168.1.102	0040965d9a2c	
(Auto Apply On) :Bottom, :Down, ^R, =, <ENTER>, or [Link Text]: _					

5. Press **ESC** when this message appears:

Type <esc> within 5 seconds for menu

6. Complete these steps in order to copy the AP installation key to the AP DRAM:

- a. Press **C** in order to choose Copy file.
- b. Press **1** in order to choose DRAM.
- c. Press the selection letter for AP Installation Key.

Note: If the list of configuration files contains the file VAR Installation Key, you must copy that file to DRAM along with the installation key. In order to copy the VAR installation key to DRAM, press **C** in order to choose Copy file, press **1** in order to choose DRAM, and press the selection letter for the VAR Installation Key.

7. Complete these steps in order to reformat the AP configuration memory:

- a. Press **SHIFT-1** in order to choose FORMAT memory bank.
- b. Press **2** in order to choose Config.
- c. Press **SHIFT-Y** to confirm the **FORMAT** command.

8. Complete these steps in order to copy the installation key back to the configuration memory:

- a. Press **C** in order to choose Copy file.
- b. Press **2** in order to choose Config.
- c. Press the selection letter for AP Installation Key.

9. In order to run the AP firmware, press **R** in order to choose Run.

Select the letter for the firmware file that displays. This message appears while the AP starts the firmware:

Inflating *firmware file name*

10. When the Express Setup screen appears, begin to reconfigure the AP with the terminal emulator or an Internet browser.

Reset for Boot Block Version 1.02 or Later

Complete these steps in order to reset your AP if the boot block version on your AP is version 1.02 or later:

1. Connect to the AP.
2. Click **OK**.
3. Press **Enter**.
4. When the Summary Status screen appears, reboot the AP.

In order to reboot, you can unplug and then replug the power connector or press **CTRL-X**.

Here is an example of the Summary Status screen:

BR350-5d9a2c		[Cisco 350 Series Bridge 12.00T]		Uptime: 00:13:09	
<hr/>					
Associations					
[CInts: 0] of 0		[Rptrs: 0] of 0		[Brdgs: 0] of 1 [APs]: 1	
<hr/>					
Events					
Time	Severity	Description			
00:02:25	(Info):	Successfully configured DHCP Parameters			
00:01:08	(Warning):	No DHCP OFFER's received, restarting the negotiation in the background			
<hr/>					
Network Ports					
Device	Status	Mb/s	IP Addr.	MAC Addr.	
[Ethernet]	Up	100.0	192.168.1.102	0040965d9a2c	
[Rt Radio]	Up	11.0	192.168.1.102	0040965d9a2c	
<hr/>					
===[Diagnostics]===					
(Auto Apply On) :Bottom, :Down, ^R, =, <ENTER>, or [Link Text]: _					

5. When the memory files are listed under the heading Memory:File, press **CTRL-W** within five seconds in order to reach the boot block menu.
6. Complete these steps in order to copy the AP installation key to the AP DRAM:

- a. Press **C** in order to choose Copy file.
- b. Press **1** in order to choose DRAM.
- c. Press the selection letter for AP Installation Key.

Note: If the list of configuration files contains the file VAR Installation Key, you must copy that file to DRAM along with the installation key. In order to copy the VAR installation key to DRAM, press **C** in order to choose Copy file, press **1** in order to choose DRAM, and press the selection letter for the VAR Installation Key.

7. Complete these steps in order to reformat the AP configuration memory:
 - a. Press **CTRL-Z** and press **!** in order to choose FORMAT memory bank from the available options.
 - b. Press **2** in order to choose Config.
 - c. Press **Y** in order to confirm the **FORMAT** command.
8. Complete these steps in order to copy the installation key back to the configuration memory:
 - a. Press **C** in order to choose Copy file.
 - b. Press **2** in order to choose Config.
 - c. Press the selection letter for AP Installation Key.
9. In order to run the AP firmware, press **R** in order to choose Run.

Select the letter for the firmware file that displays. This message appears while the AP starts the firmware:

Inflating *firmware file name*

10. When the Express Setup screen appears, begin to reconfigure the AP with the terminal emulator or an Internet browser.

Reset the AP VxWorks Version 11.07 or Later

Complete these steps in order to reset the AP on versions 11.07 and later:

1. Connect to the AP.
2. When the Summary Status screen appears, reboot the AP.

In order to reboot, you can unplug and then replug the power connector or press **CTRL-X**.

Here is an example of the Summary Status screen:

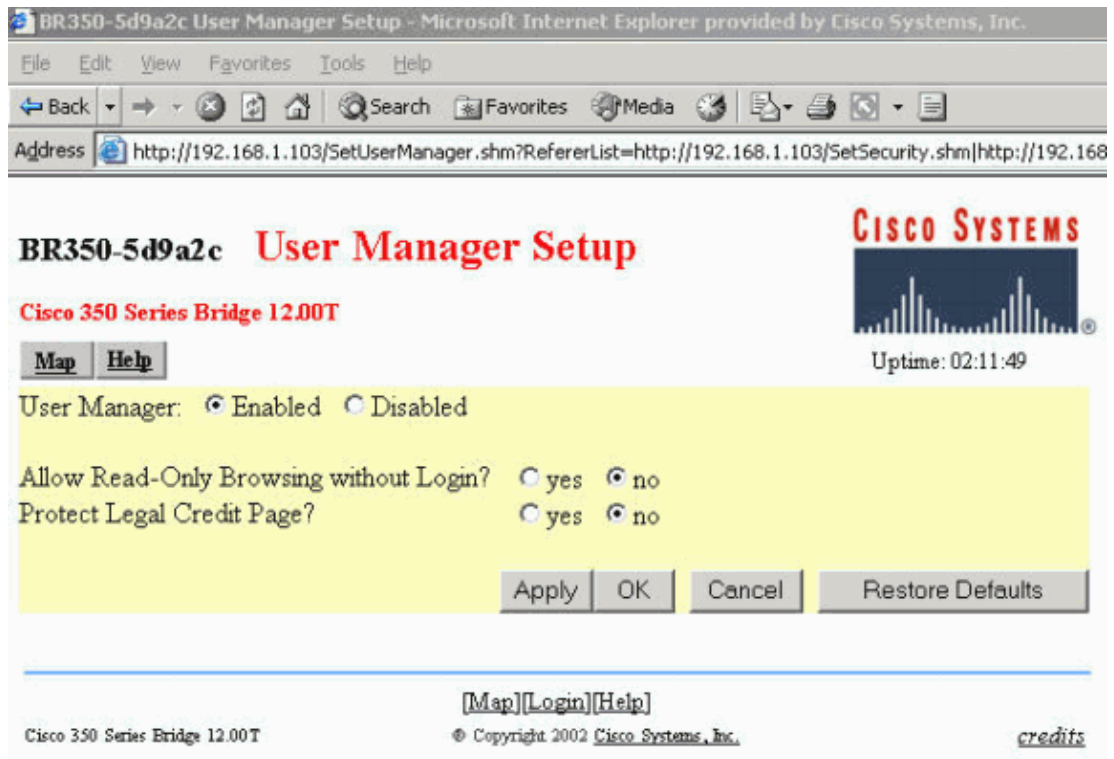
BR350-5d9a2c		[Cisco 350 Series Bridge 12.00T]		Uptime: 00:13:09	
<hr/>					
Associations					
[Clns: 0] of 0		[Rptrs: 0] of 0		[Brdgs: 0] of 1 [APs]: 1	
<hr/>					
Events					
Time	Severity	Description			
00:02:25	(Info):	Successfully configured DHCP Parameters			
00:01:08	(Warning):	No DHCP OFFER's received, restarting the negotiation in the background			
<hr/>					
Network Ports					
Device	Status	Mb/s	===[Diagnostics]===		
[Ethernet]	Up	100.0	IP Addr:	MAC	Addr:
[Rt Radio]	Up	11.0	192.168.1.102	0040965d9a2c	
			192.168.1.102	0040965d9a2c	
<hr/>					
(Auto Apply On) :Bottom, :Down, ^R, =, <ENTER>, or [Link Text]: _					

3. When the AP reboots and the Summary Status screen reappears, issue the **:resetall** command.

Note: If you do not allow users to browse in a read-only manner without the need to log in, you do not see the Summary Status screen. Instead, you are prompted for a username and password. Enter any username and password. You then see this prompt:

Authentication Failed - Retry? (y/n)

Note: Answer n to the question. You are now able to issue the **:resetall** command. In order to allow or not allow users to browse in a read-only manner, use the User Manager Setup:



If at this point you have not successfully issued the **:resetall** command, complete the steps in the Reset for Boot Block Version 1.02 or Later section of this document as a last resort.

4. Press **Enter**.
5. After you issue the **:resetall** command, enter **Yes**.

Note: In versions earlier than 12.01, the **:resetall** command is valid for only 2 minutes, immediately after the AP reboots. If you do not issue and confirm the **:resetall** command within the 2 minutes, reboot the AP again. With version 12.01, the **:resetall** command is valid for 4 minutes.

6. Press **Enter** in order to confirm the command.
7. When the Express Setup screen appears, begin to reconfigure the AP with the terminal emulator or an Internet browser.

Reset the AP Cisco IOS Software

Complete the steps in this section in order to reset Cisco IOS Software–based APs.

Note: Cisco IOS Software–based APs have a default configuration that includes a username and password combination. Both the username and password are "Cisco", which is case–sensitive. After you reset to factory defaults, be prepared to give "Cisco" as both the username and password when you are prompted by either the GUI or the command–line interface (CLI).

If the privileged command prompt **ap#** is available in the CLI, the **write erase** command and the **reload** command erase the startup configuration and reset the unit.

If the GUI is available, choose **System Software > System Configuration**. Press the **Reset to Defaults** button.

If neither the GUI nor the CLI is available with sufficient privileges, complete these instructions in order to use the Mode button:

1. Disconnect power from the AP.

- Disconnect the power jack for external power or the Ethernet cable for inline power.
2. Press and hold the **MODE** button while you reconnect power to the AP.
3. Hold the **MODE** button until the Status LED turns amber, and then release the button.

The Status LED turns amber in approximately 1 to 2 seconds.

4. After the AP reboots, reconfigure the AP and use the web browser interface, the Telnet interface, or Cisco IOS Software commands.

Note: The AP is configured with the factory default values that include:

- ◆ The IP address, which is set to receive an IP address with DHCP
- ◆ The default username and password, "Cisco"

Reset the AP AP 350 That Runs Cisco IOS Software

Complete the steps in this section in order to reset an AP 350 that runs Cisco IOS Software.

Note: Cisco IOS Software–based APs have a default configuration that includes a username and password combination. Both the username and password are "Cisco", which is case–sensitive. After you reset to factory defaults, be prepared to give "Cisco" as both the username and password when you are prompted by either the GUI or the CLI.

If the privileged command prompt `ap#` is available in the CLI, the **write erase** command and the **reload** command erase the startup configuration and reset the unit.

If the GUI is available, choose **System Software > System Configuration**. Press the **Reset to Defaults** button.

The AP350 does not have a MODE button to reset the AP to factory defaults. So, if neither the GUI or CLI is available with sufficient privileges in the AP350, complete these steps to delete the current configuration and return all access point settings to the factory defaults using the CLI.

1. Reboot the access point by removing power and reapplying power. Let the access point boot until the command prompt appears and the access point begins to inflate the image. When you see these lines on the CLI, press **ESC**: Loading "<image name>"

```
...#####
#####
#####
#####
#####
```

2. Once you press **ESC**, this information is displayed on the CLI screen..

```
Xmodem file system is available.
flashfs[0]: filesystem check interrupted!
```

```
The system has been interrupted, or encountered an error
during initialization of the flash filesystem. The following
commands will initialize the flash filesystem, and finish
loading the operating system software:
```

```
flash_init
ether_init
tftp_init
boot
```

```
ap:
```

3. At the `ap:` prompt, issue the **flash_init** command.


```

ap: flash_init
Initializing Flash...
flashfs[0]: 142 files, 6 directories
flashfs[0]: 0 orphaned files, 0 orphaned directories
flashfs[0]: Total bytes: 7612416
flashfs[0]: Bytes used: 3407360
flashfs[0]: Bytes available: 4205056
flashfs[0]: flashfs fsck took 0 seconds.
...done initializing Flash.

```

4. Issue the **dir flash:** command in order to view the contents of Flash, and find the config.txt configuration file.

```

ap: dir flash:
Directory of flash:/

 3    -rwx   223      <date>                env_vars
 4    -rwx   2190     <date>                config.txt
 5    -rwx    27      <date>                private-config
150   drwx   320      <date>                c350-k9w7-mx.122-13.JA

```

```

4207616 bytes available (3404800 bytes used)

```

5. Rename the config.txt file to config.old.

```

ap: rename flash:config.txt flash:config.old

```

6. Issue the **reset** command in order to reboot the 350.

```

ap: reset

Are you sure you want to reset the system (y/n)?y

System resetting..Xmodem file system is available.

flashfs[0]: 142 files, 6 directories
flashfs[0]: 0 orphaned files, 0 orphaned directories
flashfs[0]: Total bytes: 7612416
flashfs[0]: Bytes used: 3407360
flashfs[0]: Bytes available: 4205056
flashfs[0]: flashfs fsck took 0 seconds.
Reading cookie from flash parameter block...done.
Base ethernet MAC Address: 00:40:96:41:e4:df

Loading "flash:/c350-k9w7-mx.122-13.JA/c350-k9w7-mx.122-13.JA" ...#####

```

Note: The AP is configured with the factory default values that include:

- ◆ The IP address, which is set to receive an IP address with DHCP
- ◆ The default username and password, "Cisco"

7. After the full Cisco IOS Software is loaded and connectivity is reestablished, delete the config.old file from Flash.

Issue the **del flash:config.old** Cisco IOS Software command at an enabled prompt from the CLI.

```

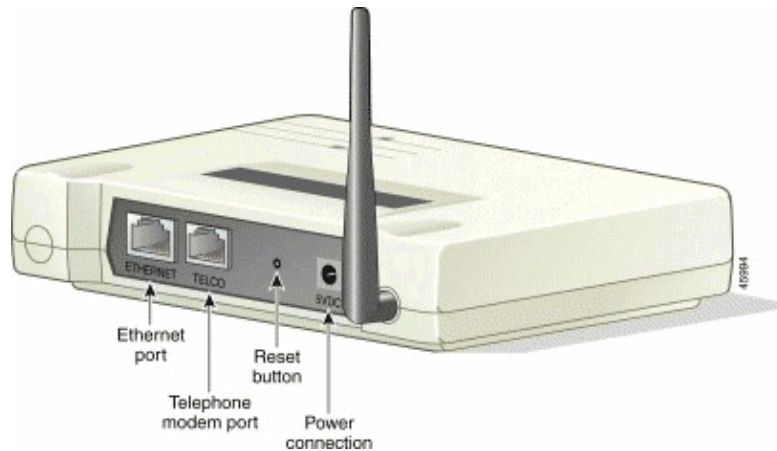
ap#del flash:config.old
Delete filename [config.old]
Delete flash:config.old [confirm]
ap#

```

Base Station

Set Defaults with the Reset Button

The Reset button is in a small hole on the back panel of the base station. You use the button to reset the base station configuration parameters to the default values.



In order to activate the Reset button, insert a straightened paper clip into the small hole and press the button until all LEDs are solid. Remove the paper clip. The Status LED blinks amber in order to show that the base station has these default parameter values:

```
Radio Network Name -- tsunami
WEP Encryption Key -- 3031323334353637383930313233
Network Type -- Infrastructure
Data Rate -- Auto
Encryption -- Enabled
Authentication Type -- Open
Encryption -- 128-bit Encryption
Association -- Mixed Cells Allowed
```

Refer to Configuring the Base Station for instructions on how to set the base station configuration parameters to the desired values when you use a wireless PC.

Client Adapters

Although there is no password for the client adapter, there are other parameters that are important for proper operation. These parameters include:

- The Service Set Identifier (SSID)
- The Client Encryption Manager (CEM) password
- The Wired Equivalent Privacy (WEP) keys

If you find that you must reset these parameters, complete the procedures in this section.

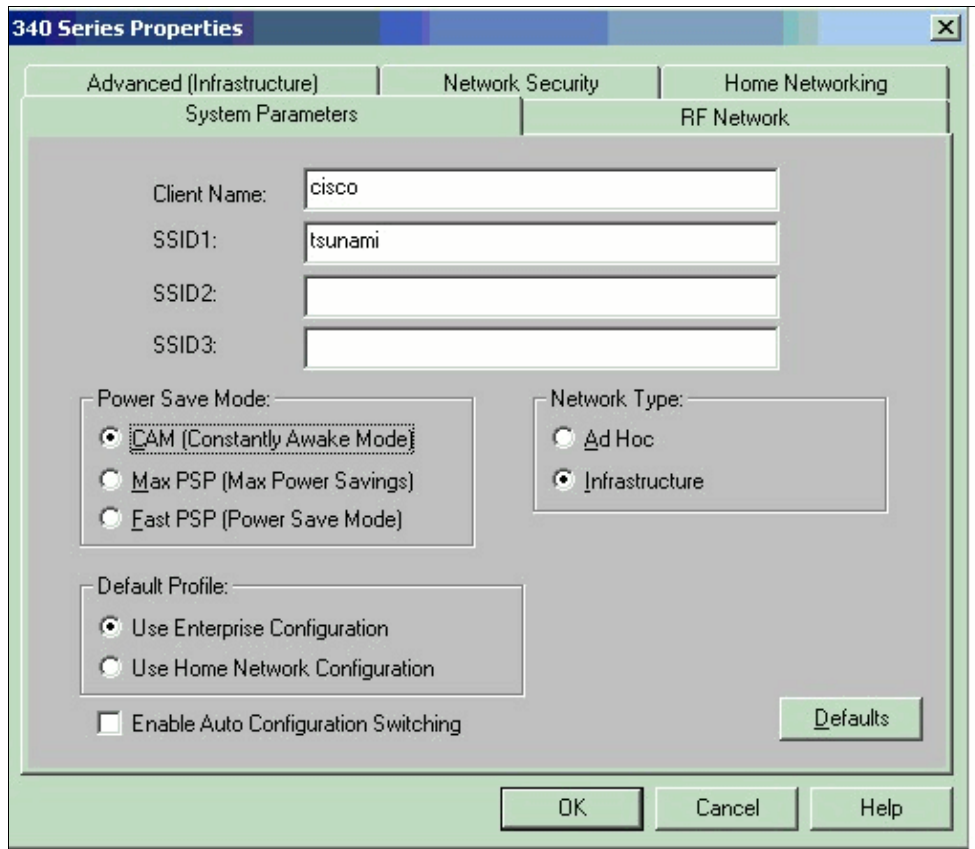
SSID

You can reset the SSID in the same manner in which it was originally set. Use the Aironet Client Utility (ACU) with these steps:

1. Click the **Commands** menu.
2. Choose **Edit Properties**.
3. Under the System Parameters tab, enter the correct value or values for the SSIDs.

Check with your network administrator in order to get the correct SSIDs.

4. Click **OK** in order to save your configuration changes.



Set Defaults

In order to set the client adapter to its defaults, click the **System Parameters** tab. On the bottom right corner of the panel, click **Defaults**.

CEM Password

CEM stands for Client Encryption Manager. With this CEM, you can view the client adapter's current static WEP key settings, enter a new static WEP key, and enable WEP or overwrite an existing static WEP key. Refer to CEM for information on how to work with CEM.

You need a password in order to run CEM, which permits the addition or modification of WEP keys. If you lose or forget this password, try the default password "Cisco". On earlier versions of CEM, try the default password "Aironet". If the default passwords do not work, you must reinstall the CEM utility.

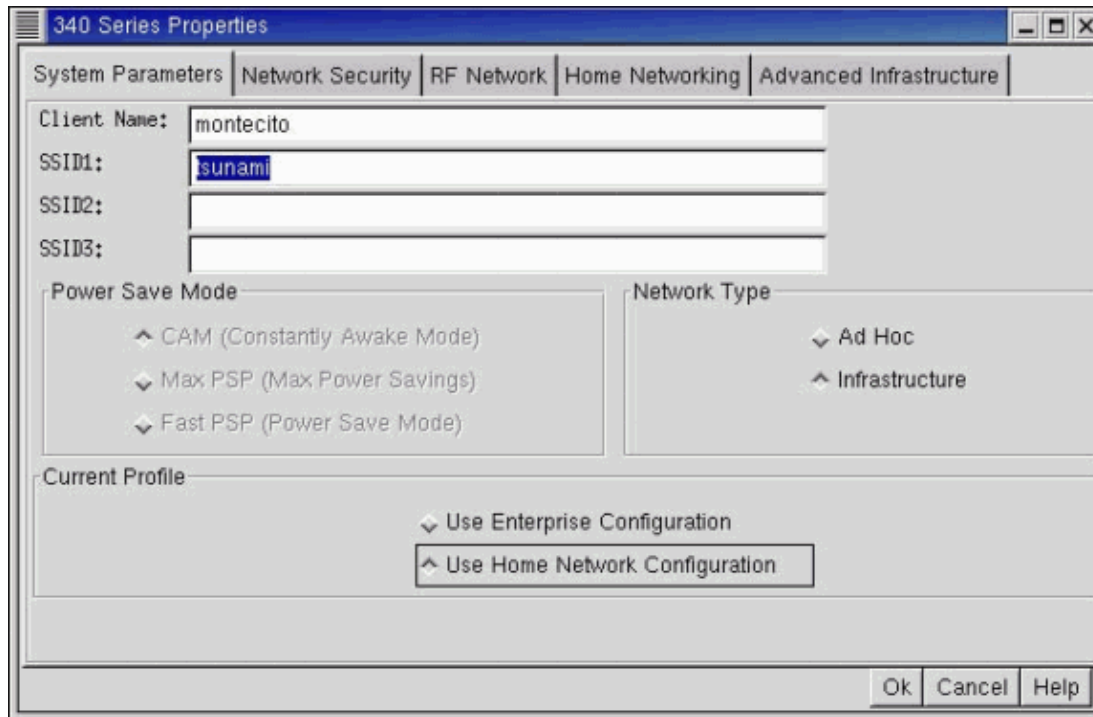
Windows Systems

For instructions to install the utilities on a Microsoft Windows system, refer to these documents:

- Installing Windows 95 Drivers and Utilities for the Cisco Aironet 340/350 Series Client Adapters
- Installing Windows 2000 Drivers and Utilities for the Cisco Aironet 340/350 Series Client Adapters
- Cisco Aironet 340, 350, and CB20A Wireless LAN Client Adapters Installation and Configuration Guide for Windows, OL-1394-06

Linux Systems

For instructions to install the utilities on a Linux system, refer to Cisco Aironet Wireless LAN Adapters Installation and Configuration Guide for Linux.



Note: CEM functionality is included in ACU on computers that run version 1.5.000 of the Linux driver/utility package. If you run this version, you must reinstall ACU in order to restore CEM functionality.

WEP Keys

When WEP keys are first configured, they are written to NVRAM on the client adapter card. You cannot view or erase the keys, but you can overwrite them with new keys.

If you need to reenter the WEP keys, contact your network administrator for the correct keys to use in order to connect to the wireless network.

For instructions on how to configure the WEP keys, refer to Configuring Wired Equivalent Privacy (WEP).

Aironet 1410 Series Bridge

Complete the steps in this section in order to reset Cisco IOS Software–based bridges.

Note: Cisco IOS Software–based APs have a default configuration that includes a username and password combination. Both the username and password are "Cisco", which is case–sensitive. After you reset to factory defaults, be prepared to give "Cisco" as both the username and password when you are prompted by either the GUI or the CLI.

If the privileged command prompt `ap#` is available in the CLI, the **write erase** command and the **reload** command erase the startup configuration and reset the unit.

If the GUI is available, choose **System Software > System Configuration**. Press the **Reset to Defaults** button.

If neither the GUI nor the CLI is available with sufficient privileges, complete these instructions in order to use the Mode button:

1. Disconnect power from the bridge power injector.

Disconnect the power jack for external power.

2. Press and hold the **MODE** button while you reconnect power to the bridge power injector.
3. Hold the **MODE** button until the Status LED turns amber, and then release the button.

The Status LED turns amber in approximately 1 to 2 seconds.

4. After the bridge reboots, reconfigure the bridge with the web browser interface, the Telnet interface, or Cisco IOS Software commands.

Note: The AP is configured with the factory default values that include:

- ◆ The IP address, which is set to receive an IP address with DHCP. If you do not have a DHCP server, you can access the bridge using the default IP address of 10.0.0.1 using HTTP/HTTPS or Telnet. Once you gain access to the bridge via Telnet or GUI, you can modify the IP address of the bridge.

Note: This default IP address of 10.0.0.1 becomes available only for a short period. So, make sure that you assign your own IP address to the bridge within that period of time.

- ◆ The default username and password, "Cisco"

Aironet 1310 Series Bridge

Complete the steps in this section in order to reset Cisco IOS Software–based bridges:

Note: Cisco IOS Software–based APs have a default configuration that includes a username and password combination. Both the username and password are "Cisco", which is case–sensitive. After you reset to factory defaults, be prepared to give "Cisco" as both the username and password when you are prompted by either the GUI or the CLI.

If the privileged command prompt `ap#` is available in the CLI, the **write erase** command and the **reload** command erase the startup configuration and reset the unit.

If the GUI is available, choose **System Software > System Configuration**. Press the **Reset to Defaults** button.

Aironet 1300 Series Bridges do not have a MODE button to reset the AP to factory defaults. So, if neither the GUI or CLI is available with sufficient privileges, complete these steps to delete the current configuration and return the entire bridge settings to the factory defaults using the CLI.

1. Open the CLI with a Telnet session or a connection to the bridge console port.
2. Reboot the bridge by removing and reapplying power.
3. Allow the bridge to boot until the command prompt appears and the bridge begins to inflate the image.

Press **ESC** when you see lines that are similar to these on the CLI:

```
Loading "flash:/c1310-k9kw-7mx.v122_15_ja.200040314-k9w7-mx.v122_15_ja.20040314"
...#####
```

Note: In order to access the boot loader, you must press **ESC** twice. But this action depends on the terminal-emulation software that you use.

Messages that are similar to these appear:

```
Error loading "flash:/c1310-k9kw-7mx.v122_15_ja.200040314-k9w7-mx.v122_15_
ja.20040314"
```

```
Interrupt within 5 seconds to abort boot process.
```

```
Boot process terminated.
```

```
The system is unable to boot automatically. The BOOT environment variable needs to
be set to a bootable image.
```

```
C1310 Boot Loader (C1310-BOOT-M), Version 12.2 [BLD-v122_15-ja_throttle.20040314 100
```

```
bridge:
```

4. At the **bridge:** prompt, issue the **dir flash:** command in order to view a directory of the Flash file system.

The directory is similar to this directory:

```
bridge: dir flash:
```

```
Directory of flash:/
```

2	-rwx	0	<date>	env_vars
5	drwx	384	<date>	C1310-k9w7-mx.v133_15_JA.20040314
3	-rwx	1128	<date>	config.txt
4	-rwx	5	<date>	private-config

```
3693568 bytes available (4047872 bytes used)
```

```
bridge:
```

5. Delete or rename the files config.txt and env_vars, and reboot the bridge.

Note: Do not forget the / character before the filenames.

```
bridge: delete flash:/config.txt
Are you sure you want to delete flash:/config.txt (y/n)?y
File "flash:/config.txt" deleted
```

```
bridge: delete flash:/env_vars
Are you sure you want to delete "flash:/env_vars" (y/n)?y
File "flash:/env_vars" deleted
```

6. Issue the **boot** command in order to reboot the bridge at the **bridge:** prompt, or simply power cycle the bridge.
7. After the bridge reboots, reconfigure the bridge with the web browser interface, the Telnet interface, or Cisco IOS Software commands.

Note: The bridge is configured with the factory default values that include:

- ◆ The IP address, which is set to receive an IP address with DHCP. If you do not have a DHCP server, you can access the bridge using the default IP address of 10.0.0.1 using HTTP/HTTPS or Telnet. Once you gain access to the bridge via Telnet or GUI, you can modify the IP address of the bridge.

Note: This default IP address of 10.0.0.1 becomes available only for a short period. So, make sure that you assign your own IP address to the bridge within that period of time.

- ◆ The default username and password, "Cisco".

Aironet 350 Series Bridge

For Software Version 11.xx or Later

If you forget the password that allows you to configure the 350 bridge through the console port, you must completely reset the configuration. Complete these steps in order to delete the current configuration and return all settings to the factory defaults:

1. Use a straight-through cable with 9-pin male to 9-pin female connectors in order to connect the COM 1 or COM 2 port on your computer to the RS-232 port on the bridge.

For more information, refer to the Cabling Guide for Console and AUX Ports.

2. Open a terminal-emulation program on your computer.

Note: These instructions describe HyperTerminal. Other programs are similar.

3. Enter a name in the Connection Description window.
4. Select an icon for the connection.
5. Click **OK**.
6. In the Connect To window, use the Connect using pull-down menu in order to select the port where the cable is connected.
7. Click **OK**.
8. In the Port Settings window, make these selections:

- ◆ Bits per second (baud): **9600**
- ◆ Data bits: **8**
- ◆ Parity: **None**
- ◆ Stop bits: **1**
- ◆ Flow Control: **None**

9. Click **OK**.
10. Press **Enter**.
11. When the Main Menu screen appears, reboot the bridge.

Turn the unit off and then back on.

12. When the bridge reboots and the Summary Status screen reappears, issue the **:resetall** command.

Note: The **:resetall** command is valid for only 2 minutes, immediately after the bridge reboots. If you do not issue and confirm the **:resetall** command within the 2 minutes, reboot the bridge again.

13. Press **Enter**.
14. Enter **Yes**.
15. Press **Enter** in order to confirm the command.
16. After the bridge reboots and the Express Setup screen appears, reconfigure the bridge with the terminal emulator or an Internet browser.

```
BR350-4060be                Express Setup                Uptime: 00:01:21

System [Name                  ] [BR350-4060be                ]
[Terminal Type                ] [teletype]
MAC Address                   : 00:40:96:40:60:be
Config. Server [Protocol      ] [DHCP ]
IP [Address                   ] [10.0.0.1                ]
IP [Subnet Mask                ] [255.255.255.0        ]
Default [Gateway               ] [255.255.255.255     ]

[Radio Service Set ID (SSID)] [tsunami                ]
[Role in Radio Network        ] [Root Bridge            ]
[Optimize Radio Network For ] [Throughput] [Hw Radio]
Ensure Compatibility With:  [2Mb/sec Clients] [_] [non-Aironet 802.11] [_]

[SNMP Admin. Community       ] [                        ]

[Apply] [OK] [Cancel] [Restore Defaults]

[Home] - [Network] - [Associations] - [Setup] - [Logs] - [Help]
[END]

(Auto Apply On) ^R, =, <ENTER>, or [Link Text]: _
```

Aironet 340 Series Bridge

For Software Version 8.65 or Later

If you forget the password that allows you to configure the 340 bridge through the console port, you must completely reset the configuration. Complete these steps in order to delete the current configuration and return all settings to the factory defaults:

1. Use a straight-through cable with 9-pin male to 9-pin female connectors in order to connect the COM 1 or COM 2 port on your computer to the RS-232 port on the bridge.

For more information, refer to the Cabling Guide for Console and AUX Ports.

2. Open a terminal-emulation program on your computer.

Note: These instructions describe HyperTerminal. Other programs are similar.

3. Enter a name in the Connection Description window.
4. Select an icon for the connection.
5. Click **OK**.
6. In the Connect To window, use the Connect using pull-down menu in order to select the port where the cable is connected.
7. Click **OK**.
8. In the Port Settings window, make these selections:
 - ◆ Bits per second (baud): **9600**
 - ◆ Data bits: **8**
 - ◆ Parity: **None**
 - ◆ Stop bits: **1**
 - ◆ Flow Control: **None**
9. Click **OK**.
10. In the Connection Description window, enter a name and select an icon for the connection.
11. Click **OK**.
12. Press **Enter**.
13. When the Main Menu screen appears, reboot the bridge.

Turn the unit off and then back on.

14. When the bridge reboots and the Main Menu screen reappears, enter **2** in order to choose Reset.
15. Press **Enter**.
16. Enter **Yes**.
17. Press **Enter** in order to confirm the command.
18. After the bridge reboots and the Express Setup screen appears, reconfigure the bridge with the terminal emulator or an Internet browser.

For Software Versions That Are Earlier Than 8.65

If you lose the passwords for the Aironet 340 series Ethernet Bridge, you must return the unit for service.

Note: In some instances, a bridge that connects to the bridge with the lost password is accessible. Be sure that the accessible bridge runs version 8.65 or later, and use the **Distribute Firmware** command in order to upgrade the bridge with the lost password. The instructions in the section For Software Versions 8.65 and Later apply, without the lost downtime of a return materials authorization (RMA).

Registered users can create a service request on line with the Cisco Technical Support TAC Service Request Tool (registered customers only). All users can contact Cisco Technical Support by e-mail or telephone through Cisco Worldwide Contacts.

Workgroup Bridge

The Aironet Workgroup Bridge (WGB) allows as many as eight hosts on an isolated wired LAN segment to share a single wireless connection to an AP. This enables the hosts to access other portions of the network.

You can reset the WGB to factory defaults using any of the procedures explained in How do I set the Workgroup Bridge back to its factory default settings?.

Related Information

- [Cisco IOS Software Configuration Guide for Cisco Aironet Access Points Cisco IOS Releases 12.4\(10b\)JA and 12.3\(8\)JEC](#)
 - [Cisco Aironet Workgroup Bridge FAQ](#)
 - [Enabling Security Features](#)
 - [Cisco Aironet Access Point FAQ](#)
 - [Cisco Aironet 1400 Series Cisco Aironet Ethernet Bridge and WGB FAQ](#)
 - [Password Recovery Procedure for the Wireless LAN Controller Module \(WLCM\) and Wireless Services Module \(WiSM\)](#)
 - [Wireless LAN Controller \(WLC\) Troubleshoot FAQ](#)
 - [Technical Support & Documentation – Cisco Systems](#)
-

[Contacts & Feedback](#) | [Help](#) | [Site Map](#)

© 2009 – 2010 Cisco Systems, Inc. All rights reserved. [Terms & Conditions](#) | [Privacy Statement](#) | [Cookie Policy](#) | [Trademarks of Cisco Systems, Inc.](#)

Updated: Oct 19, 2009

Document ID: 9215
